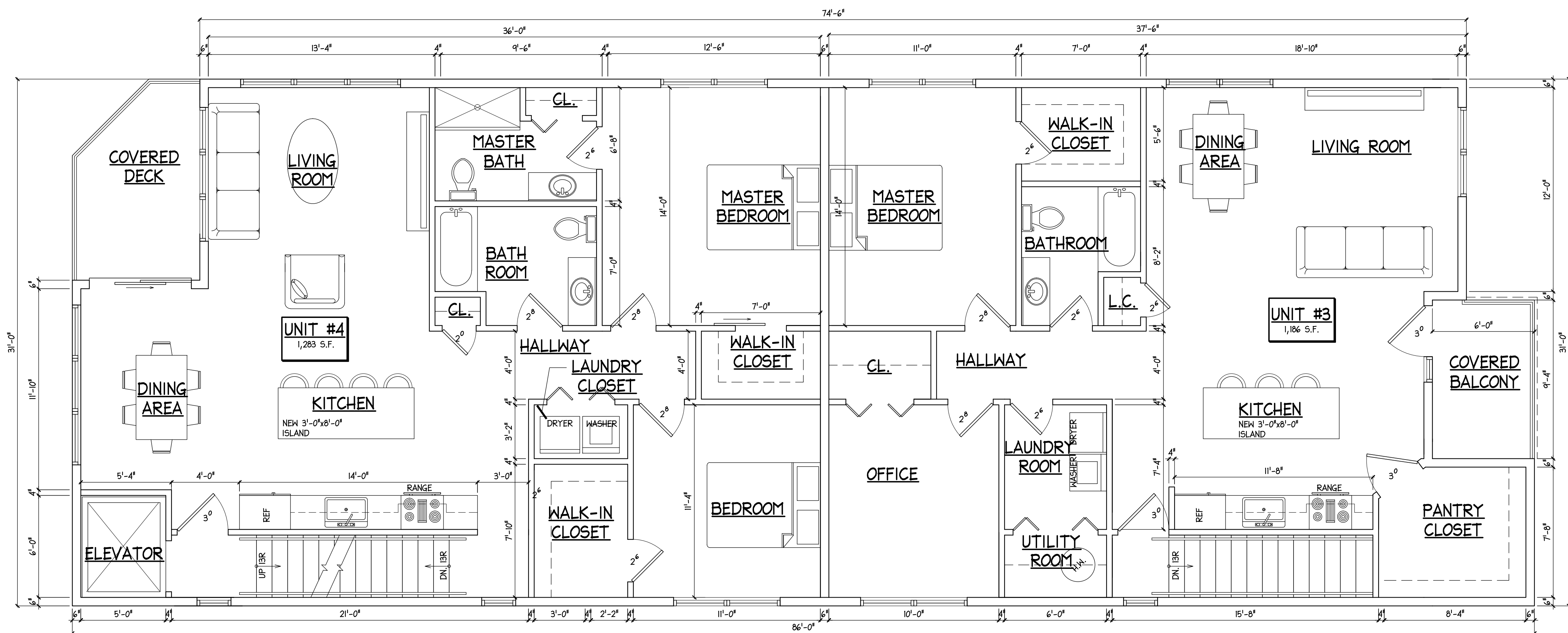
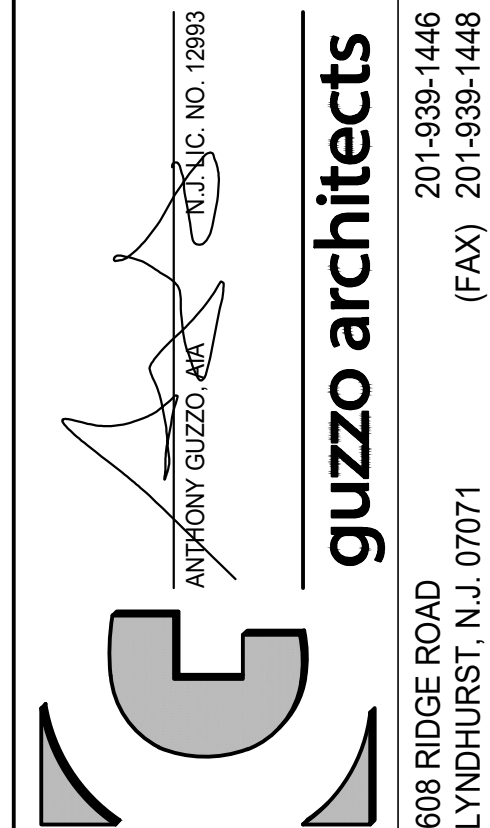


1 FIRST FLOOR PLAN
 SCALE: 1/4"=1'-0"
 S.F.: 2351.26 50FT



2 SECOND FLOOR PLAN
 SCALE: 1/4"=1'-0"
 S.F.: 2351.26 50FT

REVISION



201-938-1446
 201-938-1448
 (FAX)

608 RIDGE ROAD
 LYNDHURST, N.J. 07071

THESE DOCUMENTS ARE FOR USE SOLELY WITH RESPECT TO THIS PROJECT AND THE ARCHITECT SHALL RETAIN ALL RIGHTS INCLUDING THE COPYRIGHT. ANY OTHER USE IS PROHIBITED WITHOUT PRIOR WRITTEN CONSENT OF THE ARCHITECT.

PROPOSED MULTI-FAMILY
 118 STUYVESANT AVE
 LYNDHURST NJ 07071

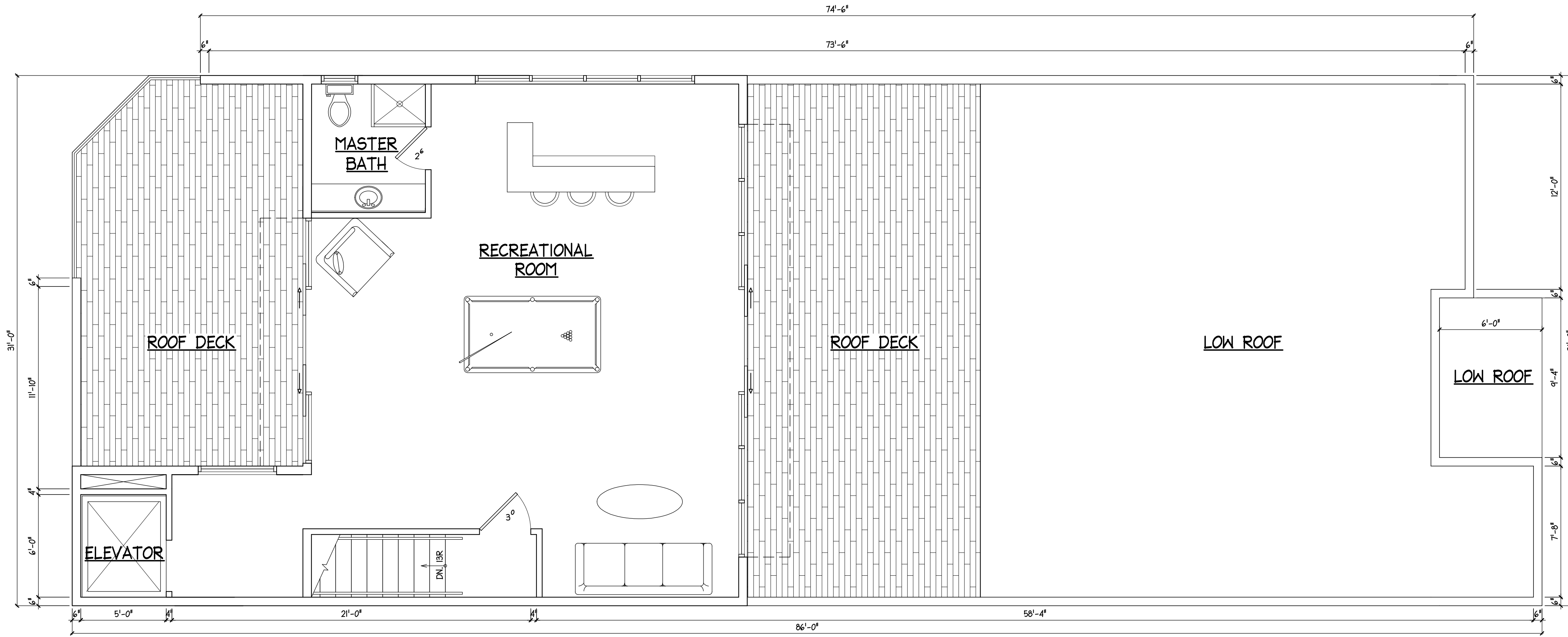
FIRST & SECOND FLOOR PLAN

DATE 03.02.23	SCALE AS NOTED	DRAWN AG AA JS
SET TYPE PRELIMINARY		
COMMISSION		

22076

DRAWING NUMBER

A-1



1 ROOF PLAN
 A-2 SCALE: 1/4"=1'-0" S.F.: 846.68 SQFT

REVISION

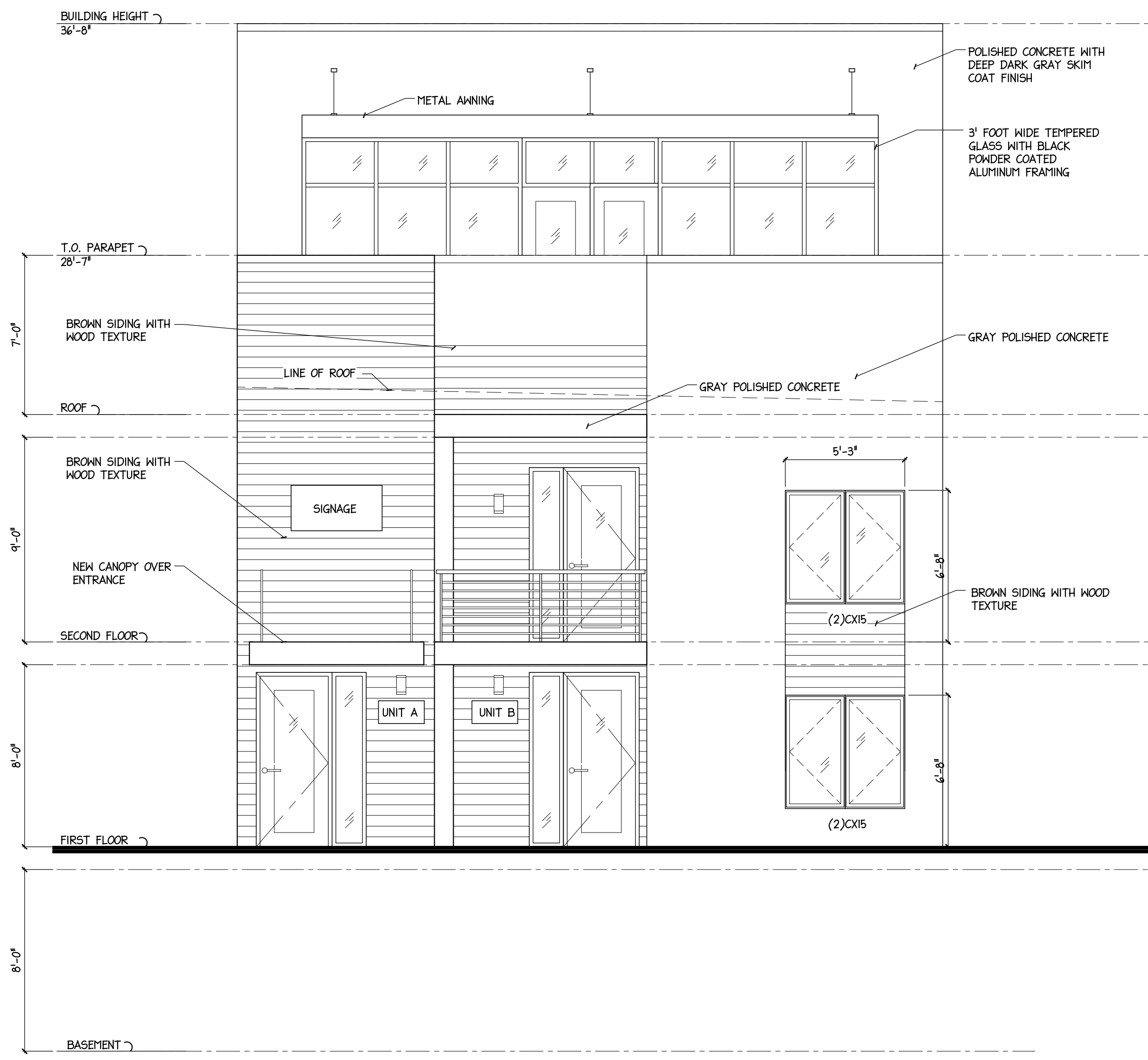
ANTHONY GUZZO, AIA
 ARCHITECT, P.C. NO. 12993
guzzo architects
 608 RIDGE ROAD
 LYNDHURST, N.J. 07071
 201-938-1446
 201-938-1448 (FAX)

THESE DOCUMENTS ARE FOR USE SOLELY WITH RESPECT TO THIS PROJECT AND THE ARCHITECT SHALL RETAIN ALL RIGHTS INCLUDING THE COPYRIGHT. ANY OTHER USE IS PROHIBITED WITHOUT PRIOR WRITTEN CONSENT OF THE ARCHITECT.

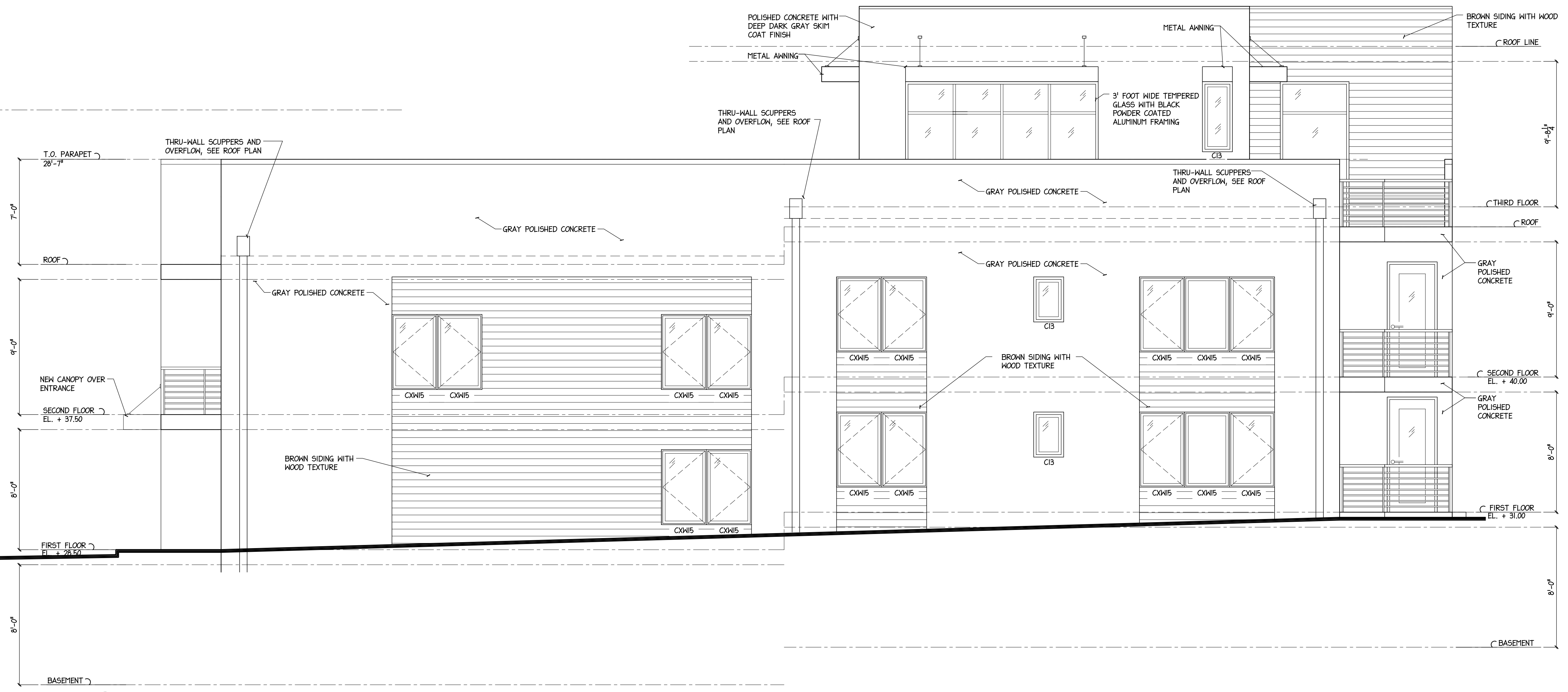
PROPOSED MULTI-FAMILY
 118 STUYVESANT AVE
 LYNDHURST NJ 07071

ROOF PLAN

DATE 03.02.23	SCALE AS NOTED	DRAWN AG AA JS
SET TYPE PRELIMINARY		
COMMISSION		
22076		
DRAWING NUMBER A-2		



1 FRONT ELEVATION
 SCALE: 1/4"=1'-0"



2 RIGHT ELEVATION
 SCALE: 1/4"=1'-0"

REVISION

ANTHONY GUZZO, AIA
 ARCHITECT
 REG. NO. 12993

guzzo architects
 201-938-1446
 201-938-1448
 (FAX)

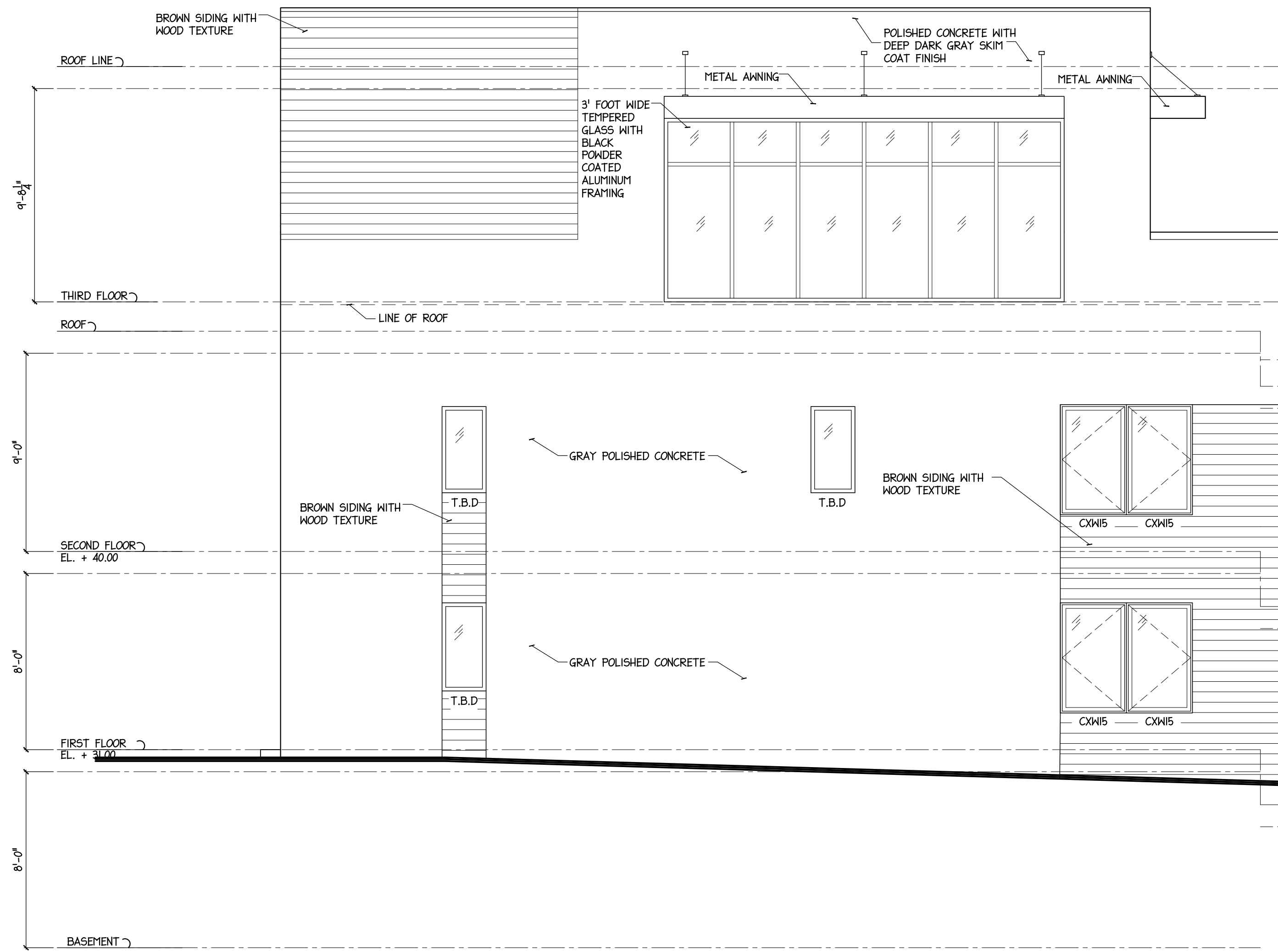
608 RIDGE ROAD
 LYNDHURST, N.J. 07071

THESE DOCUMENTS ARE FOR USE SOLELY WITH RESPECT TO THIS PROJECT AND THE ARCHITECT SHALL RETAIN ALL RIGHTS INCLUDING THE COPYRIGHT. ANY OTHER USE IS PROHIBITED WITHOUT PRIOR WRITTEN CONSENT OF THE ARCHITECT.

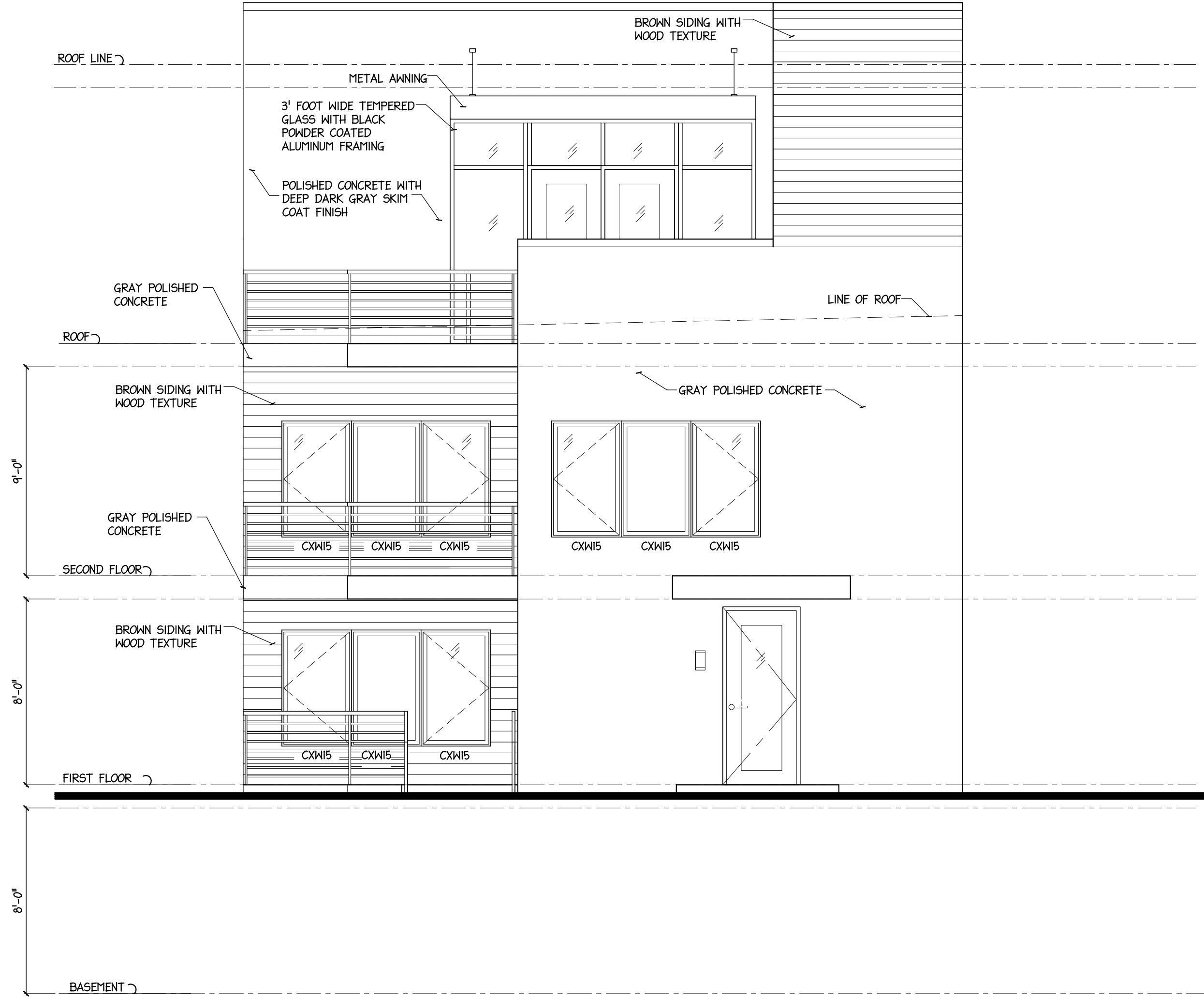
PROPOSED MULTI-FAMILY
 118 STUYVESANT AVE
 LYNDHURST NJ 07071

FRONT ELEVATION, RIGHT SIDE
 ELEVATION

DATE 03.02.23	SCALE AS NOTED	DRAWN AG AA JS
SET TYPE PRELIMINARY		
COMMISSION		
22076		
DRAWING NUMBER A-3		



2 LEFT ELEVATION
A-4 SCALE: 1/4"=1'-0"



1 REAR ELEVATION
A-4 SCALE: 1/4"=1'-0"

REVISION

ANTHONY GUZZO, AIA
ARCHITECT, NO. 12983

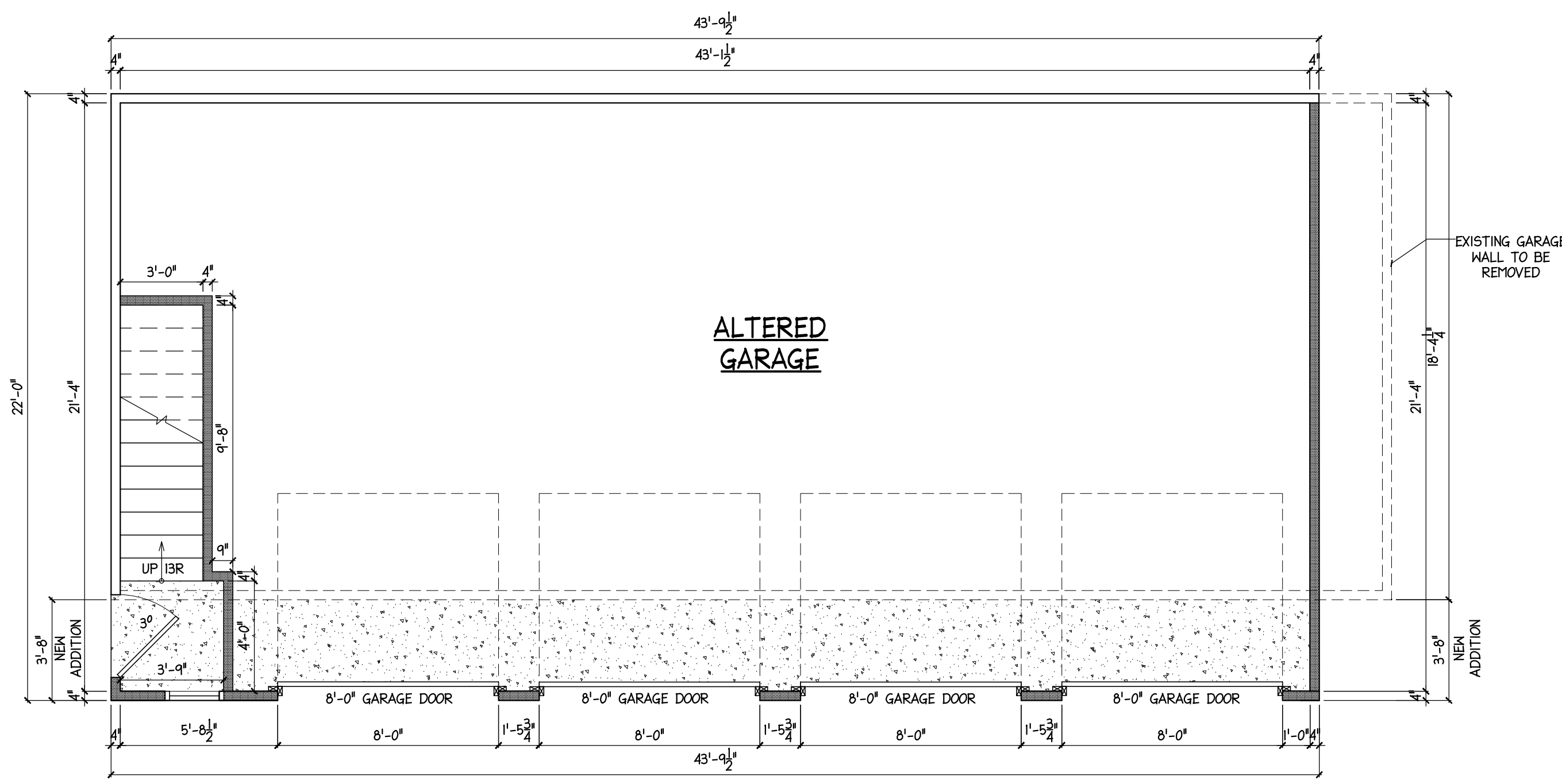
guzzo architects
201-938-1446
608 RIDGE ROAD
LYNDHURST, N.J. 07071
(FAX) 201-938-1448

THESE DOCUMENTS ARE FOR USE SOLELY WITH RESPECT TO THIS PROJECT AND THE ARCHITECT SHALL RETAIN ALL RIGHTS INCLUDING THE COPYRIGHT. ANY OTHER USE IS PROHIBITED WITHOUT PRIOR WRITTEN CONSENT OF THE ARCHITECT.

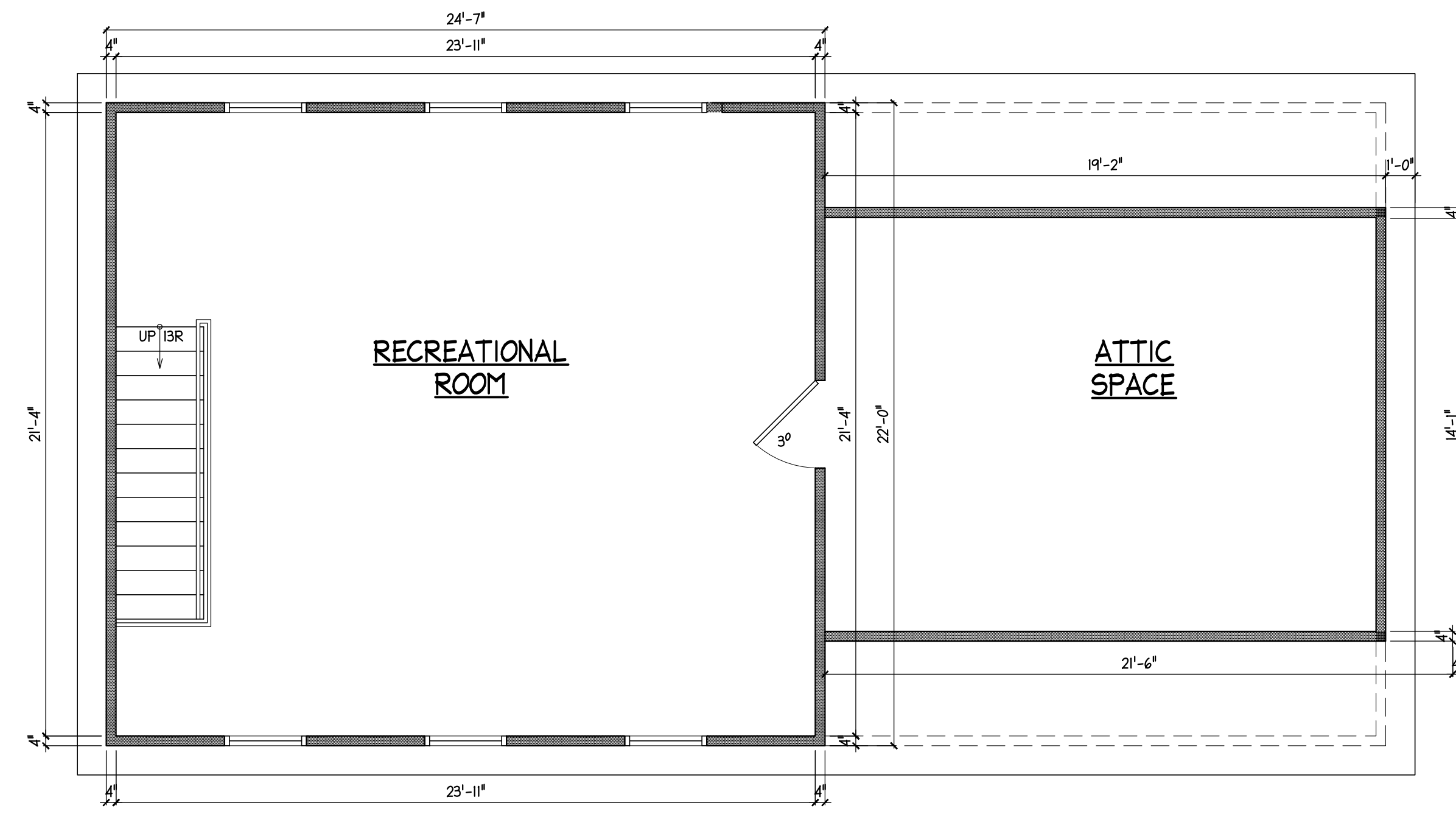
PROPOSED MULTI-FAMILY
118 STUYVESANT AVE
LYNDHURST NJ 07071

REAR ELEVATION, LEFT SIDE
ELEVATION

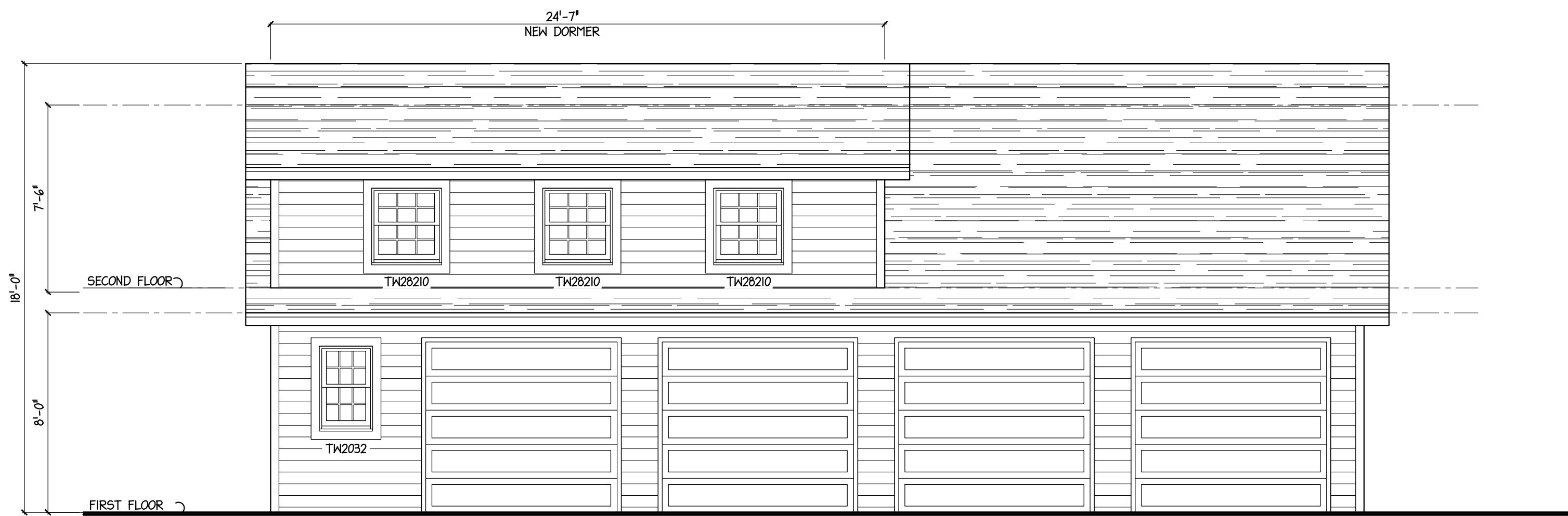
DATE 03.02.23	SCALE AS NOTED	DRAWN AG AA JS
SET TYPE PRELIMINARY		
COMMISSION		
22076		
DRAWING NUMBER		
A-4		



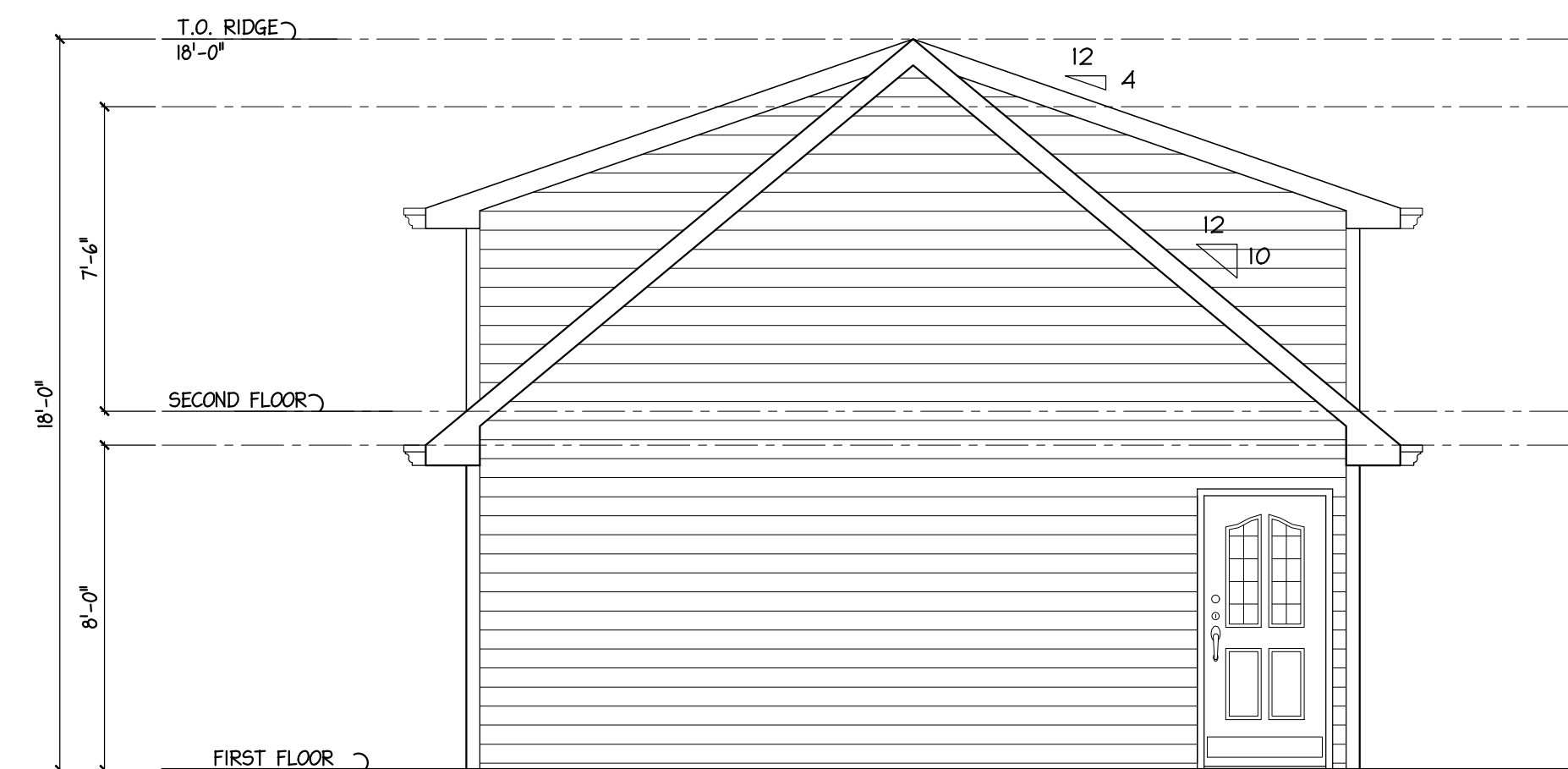
1 **FIRST FLOOR PLAN**
 A-5 SCALE: 1/4"=1'-0"



2 **UPPER FLOOR PLAN**
 A-5 SCALE: 1/4"=1'-0"



3 **FRONT ELEVATION**
 A-5 SCALE: 1/4"=1'-0"



4 **LEFT SIDE ELEVATION**
 A-5 SCALE: 1/4"=1'-0"

REVISION

guzzo architects
 608 RIDGE ROAD
 LYNDHURST, N.J. 07071
 201-938-1446
 201-938-1448 (FAX)

THESE DOCUMENTS ARE FOR USE SOLELY WITH RESPECT TO THIS PROJECT AND THE ARCHITECT SHALL RETAIN ALL RIGHTS INCLUDING THE COPYRIGHT. ANY OTHER USE IS PROHIBITED WITHOUT PRIOR WRITTEN CONSENT OF THE ARCHITECT.

PROPOSED MULTI-FAMILY
 118 STUYVESANT AVE
 LYNDHURST NJ 07071

GARAGE PLAN AND ELEVATIONS

DATE 03.02.23	SCALE AS NOTED	DRAWN AG AA JS
SET TYPE PRELIMINARY		
COMMISSION		
22076		
DRAWING NUMBER A-5		